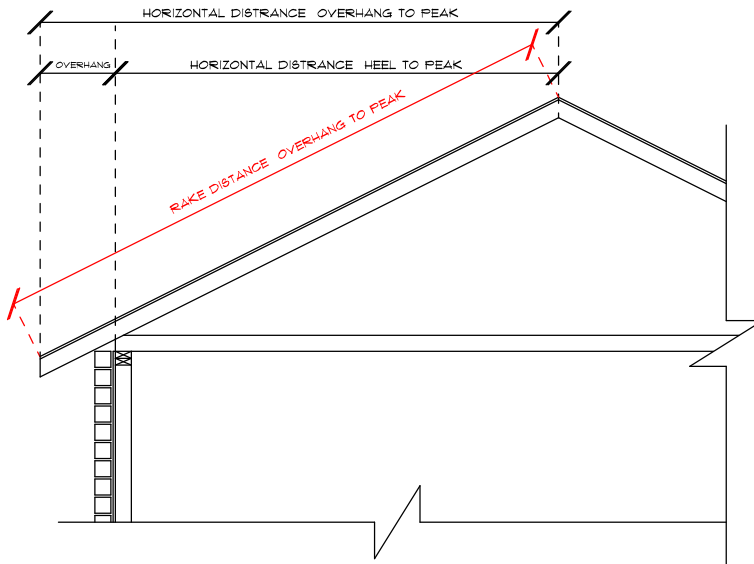


ROOF SHEATHING TAKEOFF



PITCH/12	MULTIPLIER
3 =	1.030812
4 =	1.053498
5 =	1.083216
6 =	1.11904
7 =	1.158371
8 =	1.201878
9 =	1.250814
10 =	1.30635
11 =	1.35689
12 =	1.414365
13 =	1.474088
14 =	1.536
15 =	1.6
16 =	1.665944

(HORIZONTAL DISTANCE OVERHANG TO PEAK) MULTIPLIED BY MODIFIER = (RAKE DISTANCE OVERHANG TO PEAK)

PANEL BARN INC.

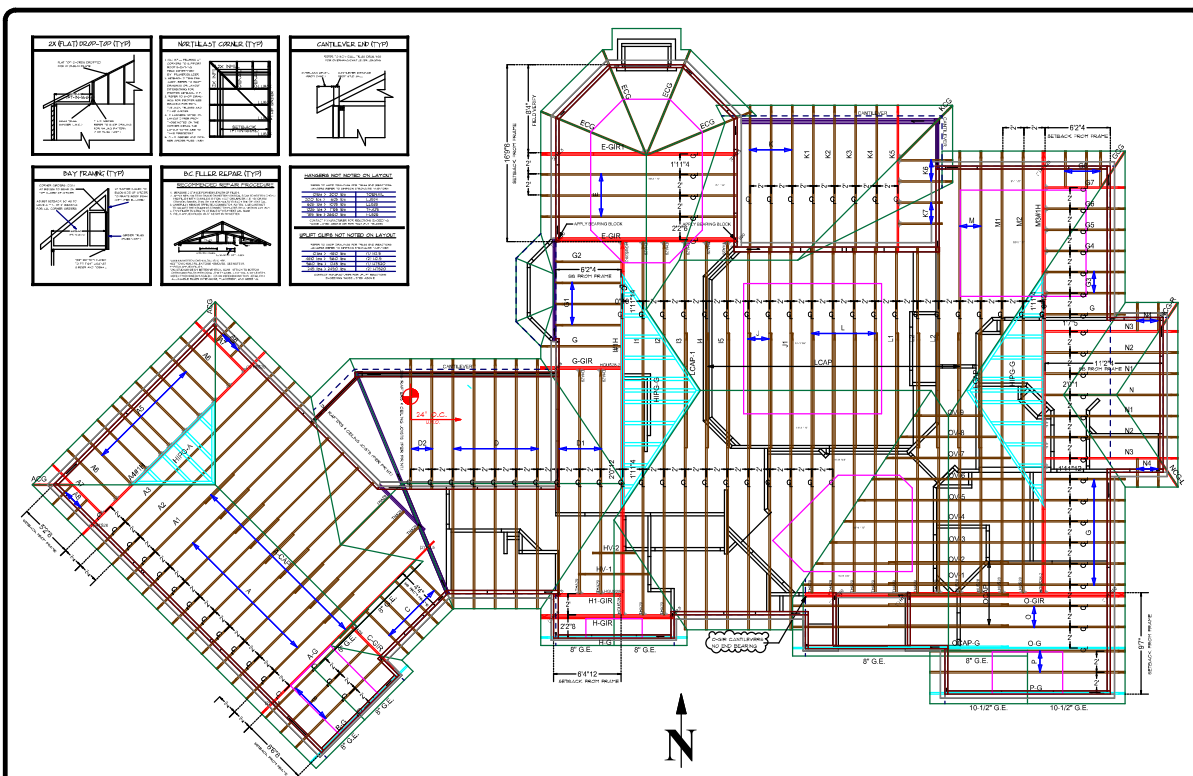
3400 MILLVILLE-SHANDON RD.
P.O. BOX 122
SHANDON, OH 45063
OFF 513.738.2666 FAX 513.738.4032
scott@panelbarn.com

EXAMPLE: PITCH = 1/2
OVERHANG = 1'4"
HEEL TO PEAK = 12'4"
O.H. TO PEAK = 13'8"

OVERHANG TO PEAK OF 13'8" (13.666666 DECIMAL FEET) MULTIPLIED BY 1/2 MODIFIER (1.158371) = RAKE DISTANCE OVERHANG TO PEAK

$(13.66666) \times (1.158371) = 15.831$ DECIMAL FEET OR 15'-10"

PANEL BARN INC. TYPICAL ROOF TRUSS LAYOUT



LAYOUT NOTES

1. DIMENSIONS GIVEN ARE IN FEET-INCHES(FRAC)
2. TRUSS TO NEAR OTHER TRUSS, LINES WITH 'L' AND 'R' TO BE CORRECT
3. ALL SETBACK DIMENSIONS ARE FROM CENTER OF MEMBER UNLESS NOTED OTHERWISE TO FACE OF MEMBER
4. REFER TO TRUSS DRAWING FOR BRACING REQUIREMENTS, CONNECTIONS, AND BRACING ON ROOF CHORDS FOR TRUSSES WITH PERMANENT USE OUTDOOR
5. HUMAN ERRORS TO BE OF 0.001" IN A DIMENSION, BUT NOT DIMENSIONS AND TOLERANCES THAT WOULD BE UNREASONABLE TO AVOID ALUMINUM (A.S.I.)
6. REFER TO ARCHITECTURAL FOR DIMENSIONS AND CENTER LINE OR OTHER DIMENSIONS ARE NOT GIVEN ON LAYOUT
7. REFER TO ARCHITECTURAL SHEET FOR PROPER LABELING, BRACING AND CONNECTION REQUIREMENTS
8. REFER TO PARTS LIST FOR IDENTIFICATION OF NUMBER
9. DIMENSIONS SHALL NOT BE ACCEPTED WITHOUT GENERAL APPROVAL BY MANUFACTURER PRIOR TO FABRICATION
10. DO NOT CUT OR MODIFY ANY TRUSS WITHOUT APPROVAL FROM ARCHITECT. ANY ALTERATION COULD LEAD TO THE COMPLETE FAILURE OF THE TRUSS OR TRUSS SYSTEM. NOTIFY IN WRITING THE DESIGNER.

BUILDER
JOB # 0074

PBL Ticket # 80000

ROOF LAYOUT DATE
October 14, 2008



DESIGNED USING
Algor Engineering Products
ALGOR ENGINEERING PRODUCTS
SOFTWARE

ROOF TRUSS
PLACEMENT GUIDE

WARNING
REFER TO BCSI'S SUMMARY SHEET FOR PROPER HOISTING REQUIREMENTS OF ROOF TRUSSES
30'0" TO 60'0" / 3/8% OF TRUSSES "B" (LENGTH + 48" / 3/4" + 33"0" SPREADER BAR / STRUTBACK)
SPECIAL PROCEDURES SHOULD BE USED IN DETERMINING SPREADER BAR/TROLLEY REQUIREMENTS FOR ALL TRUSSES

ROOF TRUSS LAYOUT IS A TRUSS PLACEMENT GUIDE
REFER TO ARCHITECTURAL PLAN FOR ROOF PROFILE
AND CONVENTIONALLY PLANNED AREAS

NOT TO SCALE

© 2008 PANEL BARN INC. ALL RIGHTS RESERVED. THIS DRAWING IS THE PROPERTY OF PANEL BARN INC. AND IS NOT TO BE REPRODUCED OR TRANSMITTED IN ANY FORM OR BY ANY MEANS, ELECTRONIC OR MECHANICAL, WITHOUT PERMISSION IN WRITING FROM PANEL BARN INC.